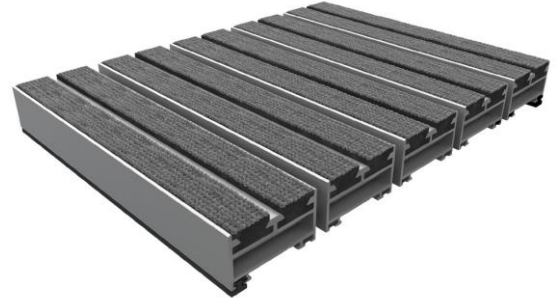


## TECHNICAL SHEET

# Polyguard<sup>®</sup> Heavy

25 mm

*Scraping, brushing or drying:  
a complete solution for any challenge*



## DESCRIPTION



This rollable entrance mat consists of aluminium profiles containing single or double drying rubber strips, interwoven with continuous polyester fibres\*. Black rubber spacing caps of 4 mm separate the rubber strips. A stainless steel wire of 2 mm diameter connects the profiles. The profiles in aluminium offer an extra solidity to resist the pressure of rolling materials. On the bottom, the profiles are provided with a sound-absorbing and anti-slip rubber strip. If desired, the profiles can be combined with uninterrupted brush or scraping profiles. Consequently, the function of the mat is to both dry as scrape and can therefore offer a solution to any challenge. The open structure of the mat ensures extra moisture and dirt retention. The mat is also easy to roll up in order to remove the dirt.



## APPLICATION

The mat is developed for inside use or outside when fully covered (without direct precipitation). Appropriate for moderate to high traffic and perfectly suitable for heavy loads and rolling materials.

**Traffic** 5.000+ passages daily

**Locations** Airports, schools and public buildings, offices, shopping centres, private homes.

Can easily manage rolling traffic up to 500 kg/10 cm<sup>2</sup>.

## PRODUCTION

The mat is made to size and in one piece depending on the length of the walking direction. Depending on the weight, the mat can be divided without any aesthetic consequences. In case the width exceeds 3 meters, the sections are installed next to one other, separated by an inverted T-bar. The required function and surroundings are relevant for the design and division of the mat.

**Warranty** 10 years

**Personalisation** Logos and personalised colours on demand. Logo strip in stainless steel is possible.

## INSTALLATION

The mat is 25 mm and is installed in an even matwell of 25 mm. The corresponding built-in frame is made of anodised aluminium or brass. If the mat has to be installed on the floor, an anodised aluminium ramping profile is possible. Taking into consideration the influence of the used materials, we do not recommend installing underfloor heating under the matwell.

## MATERIAL CHARACTERISTICS

Profiles	
Material	aluminium
Sizes	18 mm (single rubber) or 35 mm (double rubber) width & 20 mm height
Coefficient of linear thermal expansion	0,0238 mm/m per °C (± 1 mm per 40°C)

Spacing caps	
Material	soft PVC
Form	round
Diameter	min.10 mm
Thickness	4 mm

Steel wire	
Material	stainless steel, type 316
Diameter	min. 2 mm
Cramps	galvanised steel wire 0,8 mm
Nipples	8x9 SCH GR72510-08

Scraping profile	
Material	aluminium

Rubber strips	
Material	continuous tissue layers, min. 50% vulcanised solid rubber, non-recycled
Composition drying textile	8 tissue layers of polyester fibres 7 intermediate layers SBR rubber thickness 1,6 mm 2 outer layers SBR rubber thickness 0,5 mm chain 109 dr/dm polyethylene weft 43 dr/dm polyester
Colours	grey, brown, red, black, blue, green, coconut
Thickness rubber sheet	14,5 mm (± 0,5 mm)
Hardness rubber	71 shore A
Density rubber	1,23
Height rubber strips	9 mm
Width rubber strips	15 mm

Brushes	
Material	nylon 6,6, UV stabilised
Density	± 950.000 hard nylon threads/m <sup>2</sup>
Number	110 threads per brush bundle
Height	8 mm
Colours	grey, brown, red, black, blue, green, coconut, anthracite
Brush profile	hollow profile protected by an aluminium profile with protruding rim and double row of parallel brushes in hard PVC (anthracite)

## MAT CHARACTERISTICS

The total height of the mat is 25 mm. The steel wires run through and hence connect the profiles. The distance between the tension cables is max. 38 cm. The Polyguard Heavy weighs approximately 21 kg/m<sup>2</sup>. The weight of the mat in combination with the Brossguard Plus Professional brushes or scraping profiles remains 21 kg/m<sup>2</sup>.

## TESTS

In collaboration with Ghent University

<b>Fire test</b>	The mat is conform to class Bfl in the walking direction, in accordance with EN ISO 11925-2 and EN ISO 9239-1.
<b>Smoke test</b>	The mat is conform to class S1 (2012).
<b>Light fastness test</b> (resistance to photo-degradation)	This test is carried out in accordance with ISO 105 B02 (1994) and gives as result class 6-7 for the version with single rubber strips and class 7-8 for the version with Brossguard Plus Professional brushes. Class 8 is the best result (2002).
<b>Wronz test</b> (heavy wear test)	The mat achieves a value of 25.000, being the equivalent of 500.000 to 1.200.000 steps. See testing reports 02-790C and 02-793C.
<b>Static load test</b>	The mat withstands a pressure of 1000 kg per cm <sup>2</sup> . See testing reports 03-601 and 03-601 bis. There is no restriction for the load created by normal passages, shopping carts and wheelchairs. For heavy traffic, Verimpex recommends to always use a security plate and to avoid all circular movements.
<b>Moisture absorption test</b>	The capacity of the mat to absorb moisture is above 1000 ml/m <sup>2</sup> . See testing reports 02-790B and 02-793B.

*Fire and smoke tests have been performed following the classification EN13501-1 (2007+A1:2009). The products are neither impregnated nor coated; it always concerns sustainable characteristics of the used materials.*

## ECOLOGICAL FOOTPRINT

Verimpex intends to reduce its ecological footprint for each of its products. For that reason, all products are manufactured in line with 100% renewable energy and local materials.

All materials used for the production of this mat are recyclable and can receive another life at Verimpex. For more details, please consult our website.

*Verimpex Matting reserves the right to make adjustments to the products without prior communication.*

