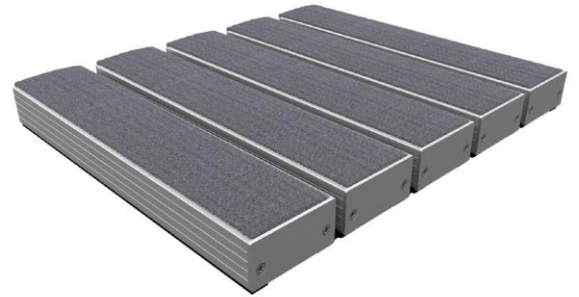


## TECHNICAL SHEET

# CleanMid<sup>®</sup> Heavy

20 & 25 mm

*The perfect balance between functionality and aesthetics*



## DESCRIPTION



This rollable entrance mat consists of aluminium profiles containing inserts and are compatible with brush or scraping profiles. The profiles are separated through black rubber spacing caps of 4 mm and are connected through a stainless steel wire of 2 mm diameter. On the bottom, the profiles are provided with a sound-absorbing and anti-slip rubber strip.

Depending on the chosen inserts and the possible combinations with continuous double brush or scraping profiles, the function of the entrance mat is to scrape, dry or a combination of both. The open structure ensures a better absorption of dirt and moisture and makes it easier to roll up the mat. Another asset is the large colour palette of dry and scrub inserts.



## APPLICATION

The wide variety of dry inserts - whether or not alternated with scrub inserts - enables a perfect integration or an aesthetic contrast with the floor. The version with rubber and/or triplebrush inlays is perfectly suited for external use. Appropriate for moderate to high traffic.

**Traffic** 2.500+ passages daily

**Locations** Home, shop or office

## PRODUCTION

The mat is made to size and in one piece depending on the length of the walking direction. Depending on the weight, the mat can be divided without any aesthetic consequences. In case the width exceeds 3 meters, the sections are installed next to one other, separated by an inverted T-bar. The required function and surroundings are relevant for the design and division of the mat.

**Warranty** 5 years

**Personalisation** Logos and personalised colours on demand. Logo strip in stainless steel is possible.

## INSTALLATION

The height of the mat is 20 or 25 mm and is installed in an even matwell of respectively 20 or 25 mm. The corresponding built-in frame is made of anodised aluminium or brass. If the mat has to be installed on the floor, an anodised aluminium ramping profile is possible. Taking into consideration the influence of the used materials, we do not recommend to install underfloor heating under the matwell.

## MATERIAL CHARACTERISTICS

Profiles	
Material	aluminium (min 78% recycled)
Sizes	32 mm width & 18 or 22 mm height
Spacing caps	
Material	soft PVC
Form	round
Diameter	10 mm
Width	4 mm
Steel wire	
Material	stainless steel, type 316
Diameter	min. 2 mm
Cramps	galvanised steel wire 0,8 mm
Nipples	8x9 SCH GR72510-08
Scraping profile	
Material	aluminium

Inserts	
Height textile	5 mm
Width textile	30 mm
Width textile base	29,5 mm
Material dry insert	<b>dry</b> 100% multifilaments polyamide 6 Ø 50.450.000 multifilaments per m <sup>2</sup> Colours : anthracite, black, brown, red, grey, green • Full colour scheme: see website. 80% of regenerated textile
Material scrub insert	<b>scrub</b> 99% multifilaments polyamide 6 > 50.450.000 multifilaments per m <sup>2</sup> 1% monofilaments polypropylene Ø 500.000 multifilaments per m <sup>2</sup> 80% of regenerated textile
Material rubber insert	shrink-free EPDM shore hardness 80 to 90
Material triplebrush insert	PVC and brushes

Brushes	
Material	nylon 6,6, UV stabilised
Density	± 600.000 hard nylon threads/m <sup>2</sup>
Number	60 threads per brush bundle
Height	8 mm
Colours	grey, brown, red, black, blue, green, coconut, anthracite
Brush profile	hollow profile protected by an aluminium profile with protruding rim and double row of parallel brushes in hard PVC (anthracite)

## MAT CHARACTERISTICS

The total height of the mat is 20 or 25 mm. The steel wires run through and hence connect the profiles. The distance between the tension cables is max. 38 cm. The CleanMid Heavy with dry/scrub inserts weighs respectively 15 and 16 kg/m<sup>2</sup>. For the version with rubber or triplebrush, the weight is respectively 18 and 19 kg/m<sup>2</sup>. In combination with a double brush row, the mat weighs 19 kg/m<sup>2</sup> or 18 kg/m<sup>2</sup> in combination with a scraping profile.

## TESTS

In collaboration with Ghent University

<b>Fire test</b>	The mat is conform to class Bfl in the walking direction, in accordance with EN ISO 11925-2 and EN ISO 9239-1 (2002).
<b>Smoke test</b>	The mat is conform to class S1 for dry/scrub and class S2 for triplebrush (2012).
<b>Light fastness test</b> (resistance to photo-degradation)	This test is carried out in accordance with ISO 105 B02 (1994) and gives as result class 6-7. Class 8 is the best result (2002).
<b>Wronz test</b> (heavy wear test)	The mat achieves a value of 25.000, being the equivalent of 500.000 to 1.200.000 steps. See testing reports 02-796C, 02-797C and 02-798C.
<b>Static load test</b>	The mat withstands a pressure of 600 kg per cm <sup>2</sup> for the version in 20 and 25 mm. See testing reports 03-601 and 03-601 bis. There is no restriction for the load created by normal passages, shopping carts and wheelchairs. For heavy traffic, Verimpex recommends to always use a security plate and to avoid all circular movements.
<b>Moisture absorption test</b>	The capacity of the mat to absorb moisture is above 1000 ml/m <sup>2</sup> for dry/scrub and almost 800 ml/m <sup>2</sup> for the combination with continuous brushes. See testing reports 02-796B, 02-797B and 02-798B.

*Fire and smoke tests have been performed following the classification EN13501-1 (2007+A1:2009). The products are neither impregnated nor coated; it always concerns sustainable characteristics of the used materials.*

## ECOLOGICAL FOOTPRINT

Verimpex intends to reduce its ecological footprint for each of its products. For that reason, all products are manufactured in line with 100% renewable energy and local materials.

The CleanMid is produced with Econyl® threads of which minimum 80% stems from regenerated material. For more details, please consult our website.

*Verimpex Matting reserves the right to make adjustments to the products without prior communication.*

